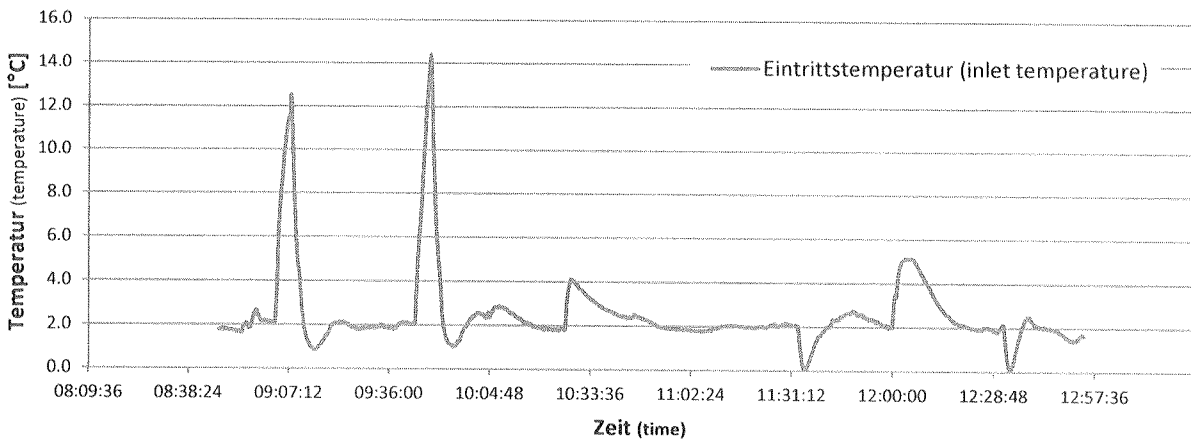
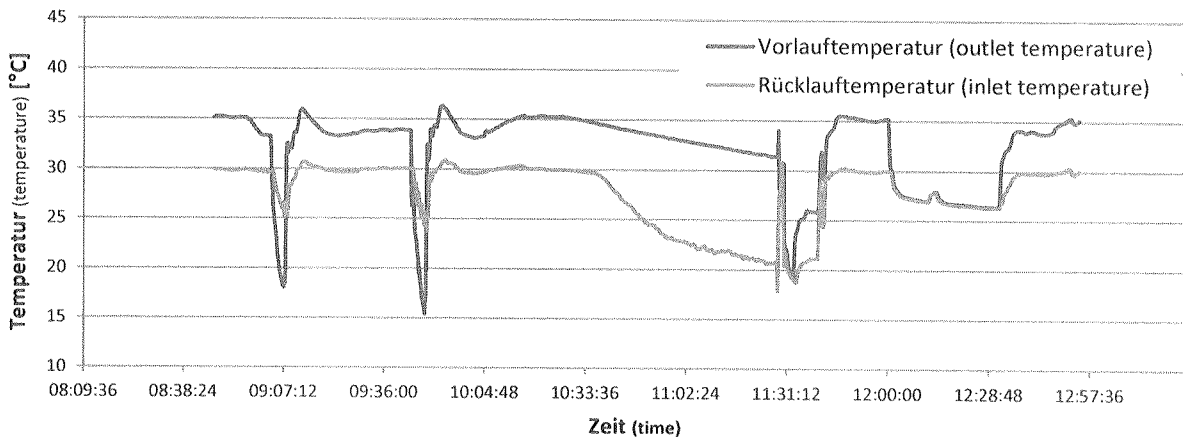


	Einheit Unit	Bemerkungen Remarks
1 Quelle ein/aus (Lüfter ausgeschaltet) source on/off (ventilator off)	hh:mm	08:57 - 10:02 Prüfung bestanden (test passed)
2 Senke ein/aus (Umwälzpumpe ausgeschaltet) sink on/off (circulation pump off)	hh:mm	10:27 - 11:28 Prüfung bestanden (test passed)
3 Netz ein/aus (Stromausfall) electric circuit on/off (power outage)	hh:mm	12:00 - 12:01 Prüfung bestanden (test passed)

Quellentemperatur (source temperature)



Senkentemperatur (sink temperature)



4 Prüfdauer (test duration)	hh:mm:ss	04:07:20		
Prüfbeginn (beginning of test)	hh:mm:ss	08:47:08	14.12.2015	2015-12-14
Prüfende (end of test)	hh:mm:ss	12:54:28	14.12.2015	2015-12-14

5 **Bemerkung** (remark)

6 **Prüfer** (supervisor) T. Loop *[Signature]*

Prüfnorm (test standard)

EN 14511-4 cause 4.4
EN 14511-4 cause 4.5

passed
passed

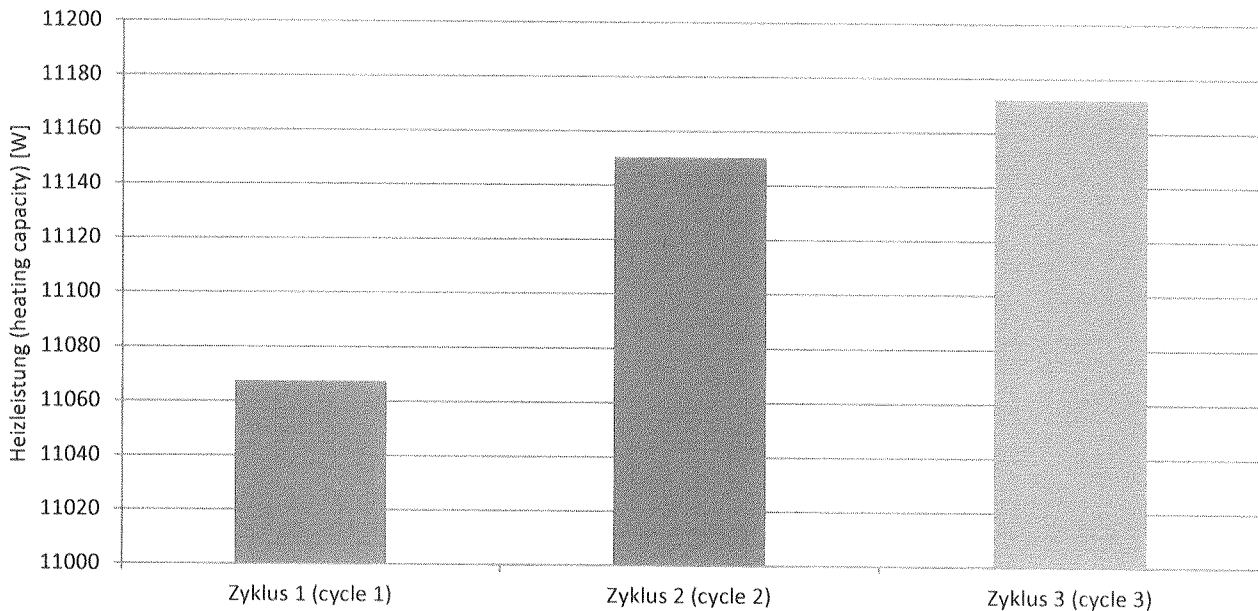
Prüfbedingung
Test condition

A2 / W35

Prüfnummer
Test number

LW-246-15-18

Messgrößen Measured variables	Einheit Unit	Mittelwert Mean	Abweichung (deviation)	
			absolute	relative
1 Heizleistung Zyklus 1 (heating capacity cycle 1)	W	11067		
Abtaudauer (period of defrosting)	min	15.7		
Heizdauer (period of heating)	min	353.8		
Relative Abtaudauer (relative duration of defrosting period)	%	4.2		
2 Heizleistung Zyklus 2 (heating capacity cycle 2)	W	11150	83	0.75%
Abtaudauer (period of defrosting)	min	15.5		
Heizdauer (period of heating)	min	375.0		
Relative Abtaudauer (relative duration of defrosting period)	%	4.0		
3 Heizleistung Zyklus 3 (heating capacity cycle 3)	W	11172	22	0.20%
Abtaudauer (period of defrosting)	min	15.5		
Heizdauer (period of heating)	min	377.3		
Relative Abtaudauer (relative duration of defrosting period)	%	3.9		



5 Prüfdauer (test duration)	hh:mm:ss	19:12:40		
Prüfbeginn (beginning of test)	hh:mm:ss	15:52:26	11.12.2015	2015-12-11
Prüfende (end of test)	hh:mm:ss	11:05:06	12.12.2015	2015-12-12

6 Bemerkung (remark)

7 Prüfer (supervisor) T. Loop

Prüfnorm (test standard)

EN 14511-4 cause 4.6
EN 14511-4 cause 4.7

passed
passed